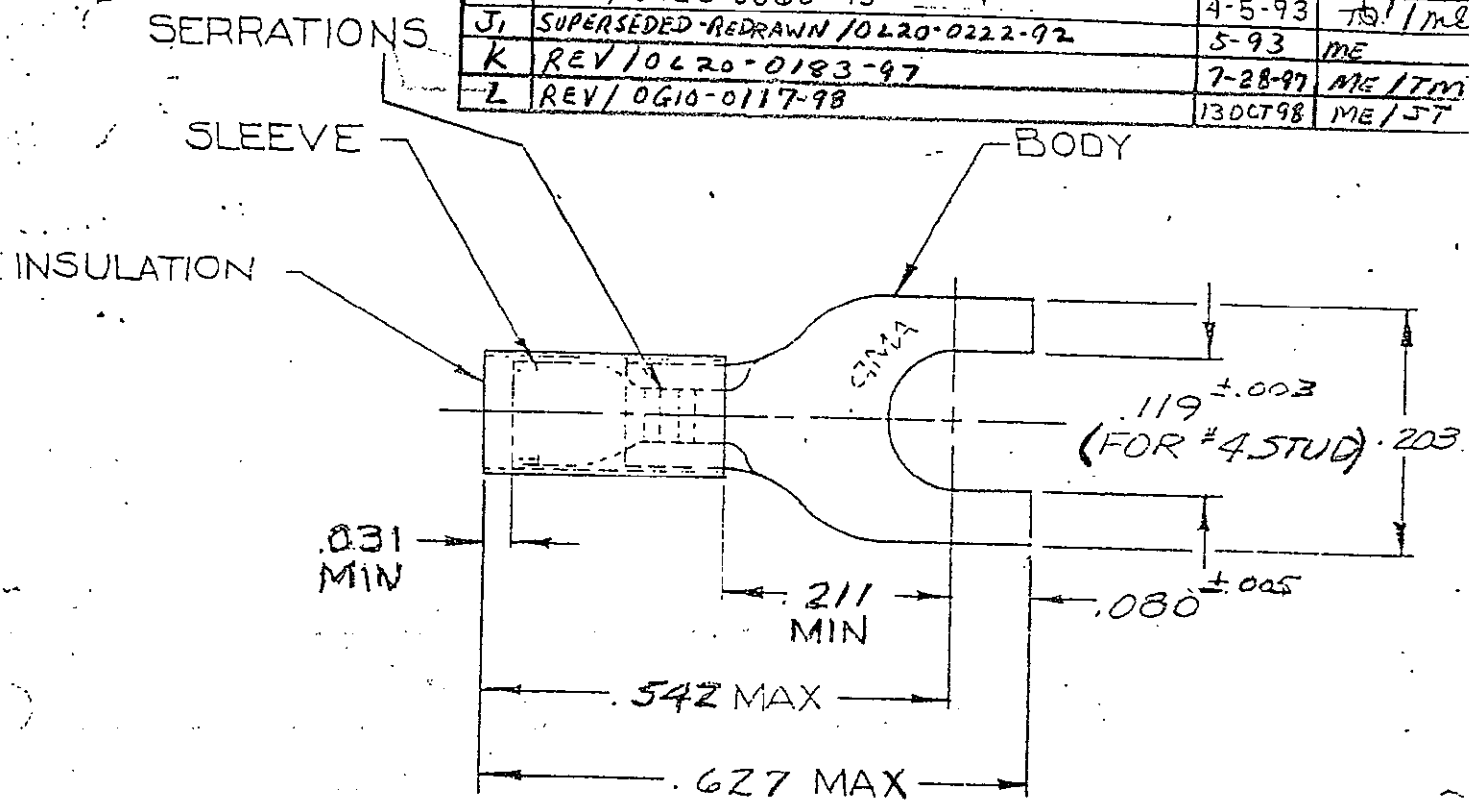


DRAWING MADE IN AMERICAN PROJECTION

LOC G 14 PRINT DISC G

© 1952 BY AMP INCORPORATED. ALL RIGHTS RESERVED. AMP PRODUCTS COVERED BY PATENTS AND/OR PATENTS PENDING.

REVISIONS			
LTR	DESCRIPTION	DATE	APPROVAL
M	REV-0610-0099-98	2-3-99	ME/JT
H	REV PER G-4732	7/22/88	JT
J	REV/0720-0060-93	4-5-93	JT/ME
J1	SUPERSEDED-REDRAWN/0620-0222-92	5-93	ME
K	REV/0620-0183-97	7-28-97	ME/JT
L	REV/0610-0117-98	13OCT98	ME/JT



TONGUE MATERIAL THK = .018 ±.002
FOR .050 TO .082 WIRE INSULATION DIA

100	LOOSE PC, BOX	8-321035-1
4,000	321035 ON TAPE	2-321035-1
1,000	LOOSE PIECE	321035
QTY	DESCRIPTION	PART NO

BODY: COPPER (ASTM B-152)
TIN PL (ASTM B-545)
SLEEVE: COPPER (ASTM B-152)
TIN PL (ASTM B-545)
INSULATION: NYLON COLOR: YELLOW
MATERIAL & FINISH

UNLESS OTHERWISE SPECIFIED DIMENSIONS ARE IN INCHES
TOLERANCES ON:
DECIMALS ±.008
ANGLES ± 5°

CONTRACT NO.	4
DR.	JM Emerson 3-26-73
CHK.	JM Emerson 3-26-70
APPD	JM Emerson 3-26-70
REL.	JM Emerson 3-26-70
DSGN APPD	JM Emerson 3-26-70
OTHER APPD	



AMP INCORPORATED
HARRISBURG, PENNSYLVANIA

NAME	PIDG™ 26-22 SPADE #4 STUD	
SIZE	CODE IDENT NO.	NUMBER
A	00779	321035

SEE TABLE